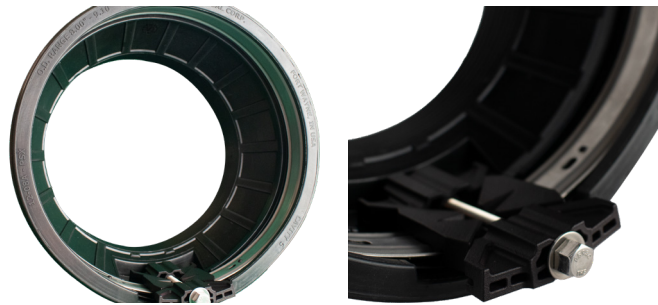


PSX: WEDGE DRIVE

PIPE TO MANHOLE & TANK CONNECTOR



What It Is

PSX: Wedge Drive is a high-performance flexible pipe-to-manhole connector that offers easy installation and long-term performance in one convenient product.

Whether you core or cast your holes, PSX: Wedge Drive fits right into your production methods, ready to seal your toughest applications every time.

How It Works

- The connector fits into a cast or cored hole.
- Take-up clamps made from series 304 stainless steel with quick adjusting screws secure the connector to the pipe.

Where To Use

- Manholes
- Wet wells
- Square pump and lift stations
- Stormwater structures
- On-site treatment structures
- Junction chambers
- Grease interceptors
- Vaults

Why It's Better

- Safely install from outside of the manhole preventing falls from crawling down into structures.
- Corrosion resistance in our 300 series stainless steel provides consistent performance in any environment.
- Manufactured with no welds or rivets for unmatched structural integrity and durability.
- The innovative engineered molded-in snap pins are a steadfast feature that helps keep the boot reliably assembled.
- Void injection technology, increasing wedge strength and durability.
- Contractor can save time and money by backfilling immediately.

Press-Seal believes all information is accurate as of its publication date. Information, specifications, and prices are all subject to change without notice. Press-Seal is not responsible for any inadvertent errors. Copyright 2024.



PSX: WEDGE DRIVE

SUBMITTAL SPECIFICATIONS

Pipe-to-Manhole and Structure Connector Specification for Sanitary and Storm Sewer Applications:

All pipe-to-manhole and structure connections shall meet and or exceed ASTM C 923, Standard Specification for Resilient Connectors Between Reinforced Concrete Manholes, Structures, Pipes and laterals.

All metallic mechanical devices, including castings, bolt assemblies, adjusters shall use non-magnetic 300 series stainless steel with no welds or rivets in its assemblies.

If thermal plastic internal expansion rings or expansion wedges are used, they must be heavy duty automotive grade material molded with an expansion installation mechanism.

The installation of the connector shall be accomplished at one time and shall require no additional adjustments or installation at a later time to ensure a watertight seal.

Take up clamps shall use non-magnetic 300 series stainless steel and be installed in the field using a T-Handle Torque wrench set to 60 inch-pounds and installation shall follow manufacturer's instructions.

The connector shall be PSX: Wedge Drive, PSX: Direct Drive and PSX: Nylo Drive as manufactured by Press-Seal Corporation of Fort Wayne, IN or approved equal.

PRODUCT PERFORMANCE

PSX: Wedge Drive, PSX: Nylo Drive, PSX: Direct Drive meets or exceeds the all requirements of the following specifications:

- ASTM C 923 - Standard Specification for Resilient Connectors Between Reinforced Concrete Manhole Structures, Pipes, and Laterals
- ASTM C 1244 Standard Test Method for Concrete Sewer Manholes by the Negative Air Pressure (Vacuum) Test
- ASTM C 1478 - Standard Specification for Storm Drain Resilient Connectors Between Reinforced Concrete Storm Sewer Structures, Pipes, and Laterals
- ASTM F 2510 Standard Specification for Resilient Connectors Between Reinforced Concrete Manhole Structures and Corrugated High Density Polyethylene Drainage Pipes

BEST PRACTICES

1. Vacuum testing shall be conducted in strict conformance with ASTM C 1244, prior to backfill.
2. Pipe Stubs must be restrained from movement per ASTM C 923.
3. Tightening of the external stainless steel take-up clamps should be done by using a torque-setting wrench available from Press-Seal Corporation.



Press-Seal believes all information is accurate as of its publication date. Information, specifications, and prices are all subject to change without notice. Press-Seal is not responsible for any inadvertent errors. Copyright 2024.

Phone: 800-348-7325
Fax: (260) 436-1908

PRESS-SEAL CORPORATION
Protecting Our Planet's Clean Water Supply
ISO 9001: Registered • Version 06.05.24.3.03

Email: sales@press-seal.com
Web: www.press-seal.com

PSX: WEDGE DRIVE

SELECTION GUIDE

HOLE SIZE	PSX™:WEDGE DRIVE SIZE and DESCRIPTION	CONNECTOR PART NUMBER	PIPE O.D. ACCOMMODATION RANGE (INCHES)	GASKET I.D. (INCHES)	TAKE-UP CLAMP	
					QTY	PART #
11" 11.00-11.20" 279-284 mm	11-06.A PSX™:WEDGE DRIVE	558.1106.A	5.70" - 6.90" 145 - 175 mm	6.30" 160 mm	1	600.128
11" 11.00-11.20" 279-284 mm	11-08.A PSX™:WEDGE DRIVE	558.1108.A	8.00 - 8.50" 203 - 216 mm	8.44" 214 mm	1	600.152
12" 12.00-12.20" 305-310 mm	12-06.A PSX™:WEDGE DRIVE	558.1206.A	5.70" - 6.90" 145 - 175 mm	6.30" 160 mm	1	600.128
12" 12.00-12.20" 305-310 mm	12-08.A PSX™:WEDGE DRIVE	558.1208.A	8.00 - 9.10" 203 - 231 mm	8.63" 219 mm	1	600.152
16" 16.00-16.20" 406-411 mm	16Y.A PSX™:WEDGE DRIVE	558.16Y.A	10.00 - 11.10" 254 - 282 mm	10.75" 273 mm	1	600.188
16" 16.00-16.20" 406-411 mm	16L.A PSX™:WEDGE DRIVE	558.16L.A	11.36 - 12.50" 289 - 318 mm	12.10" 307 mm	1	600.232
16" 16.00-16.20" 406-411 mm	16M.A PSX™:WEDGE DRIVE	558.16M.A	12.05" TO 13.30" 306 - 338 mm	12.75" 324 mm	1	600.232

Press-Seal believes all information is accurate as of its publication date. Information, specifications, and prices are all subject to change without notice. Press-Seal is not responsible for any inadvertent errors. Copyright 2024.



PSX: WEDGE DRIVE INSTALLATION INSTRUCTIONS

CONNECTOR INSTALLATION

1. Prepare the hole to receive the connector.
 - a. Clean the hole of any debris or loose dirt.
 - b. Examine the hole for any imperfections (bug holes) and wire ends on the hole surface.
 - c. Patch any voids (bug holes) with patch compound.
 - d. Remove any wire protruding up into the hole and patch with slurry if needed.
2. Place the PSX: Wedge Drive connector in the hole with the wedge mechanism in position so that it will be at the top of the hole (10 to 12 o'clock) in the final installed position of the manhole. Align the connector so that it is square to the hole both vertically & horizontally.
3. Place the PSX: Wedge Drive installation wrench on the adjuster nut so that it is firmly seated.
4. Tighten the PSX: Wedge Drive using a 1/2" socket wrench to 12 foot pounds.
5. Continue tightening until proper torque is reached. The wrench will signal this by "breaking" slightly. If in doubt torque has been reached, tighten again and wrench should "break" quickly and easily.



PSX: Wedge Drive installation wrench with a black handle is calibrated to 12 ft/lbs. of torque.
Part number: 850.BSHR14.WD.12

PIPE INSTALLATION

1. Prepare the sealing area of the pipe and ensure it's free of defects and debris.
2. Center the pipe in the opening of the
3. PSX: Wedge Drive Connector.
4. Attach the take up clamp to the PSX: Wedge Drive.
5. Position the take up clamp screw between the 9 and 3 o'clock position.
6. Tighten the take up clamp screw to 60 inch pound using our T-handle torque wrench.



T-Handle torque wrench part number: 850.2S

Press-Seal believes all information is accurate as of its publication date. Information, specifications, and prices are all subject to change without notice. Press-Seal is not responsible for any inadvertent errors. Copyright 2024.

